

IMPACT FEE ELIGIBLE PROJECTS

- 1 PUMP STATION #2
- 2 WILLIAMSBURG 1.0 MG ELEVATED STORAGE TANK
- 3 CD BOREN 12-INCH WATERLINE
- 4 MCCLENDON 12-INCH WATERLINE PHASE I
- 5 MCCLENDON 12-INCH WATERLINE PHASE II
- 6 BLACKLAND 12-INCH WATERLINE
- 7 W. FATE MAIN 12-INCH WATERLINE
- 8 GETTYSBURG 16-WATERLINE
- 9 SWEETLEAF/PRINCE 16-INCH WATERLINES
- 10 FM 551 12-INCH WATERLINE
- 11 RIDING CLUB 12-INCH WATERLINE (EAST)
- 12 ROCHELLE / BEN-PAYNE 16-INCH AND 20-INCH WATERLINES
- 13 SOUTH PUMP STATION 24-INCH WATER SUPPLY LINE AND METER VAULT
- 14 SOUTH PUMP STATION PHASE I IMPROVEMENTS
- 15 I-30 SOUTH 12-INCH WATERLINE
- 16 I-30 NORTH 12-INCH WATERLINE
- 17 WATER MASTER PLAN UPDATE
- 18 WATER IMPACT FEE UPDATE

Legend

- Existing / Under Construction Impact Fee Eligible Project
- Proposed Impact Fee Eligible Project
- Roads
- Railroad
- Water Service Area
- City Limits
- ETJ

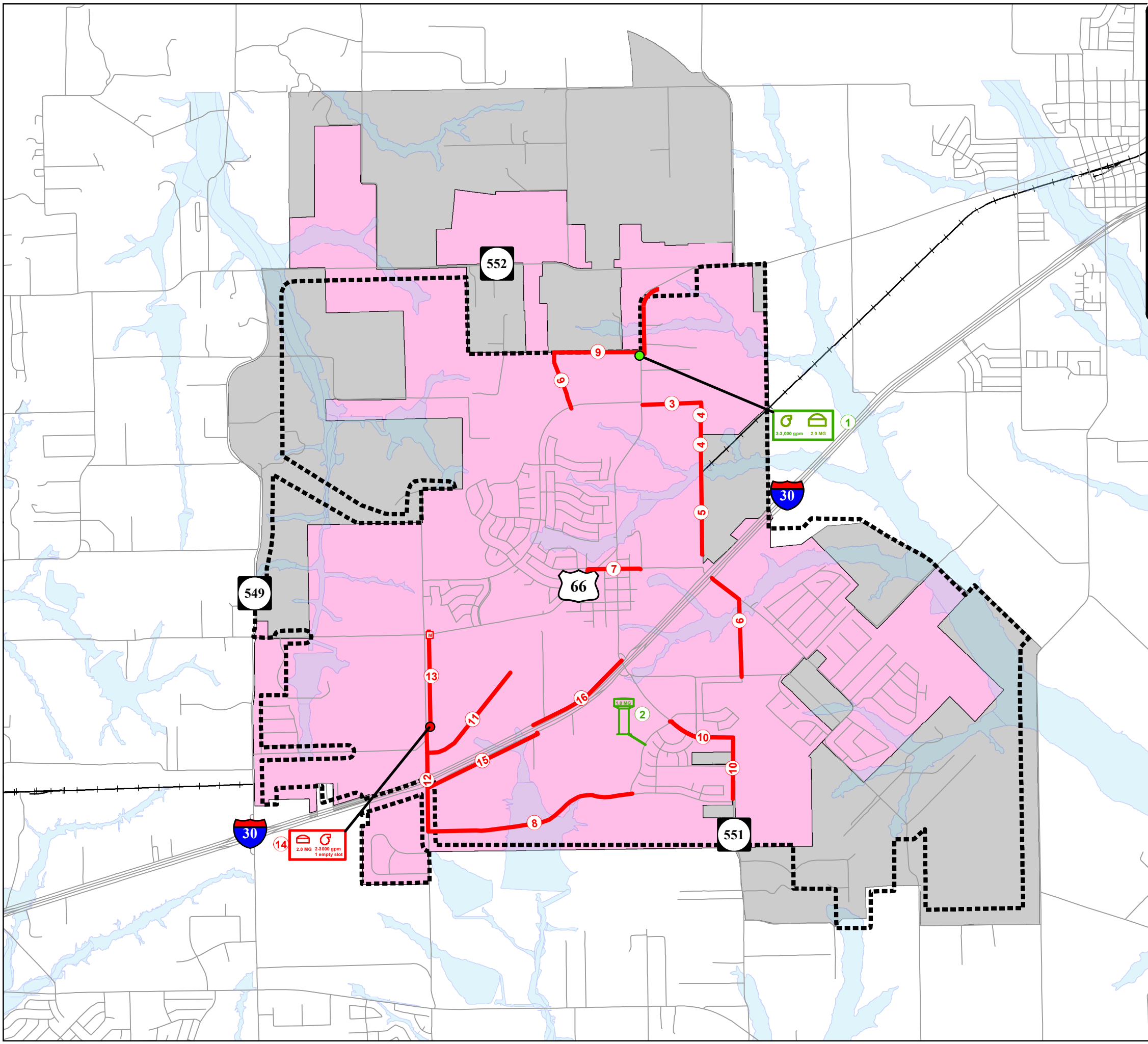


Exhibit 3
Water Impact Fee Capital Improvements Plan

0 3,000 6,000
 Feet

January 2016

Kimley»Horn